

# GUIDE TO CHANGE MAC

## 1. HW READY

1) ready the RS232-232 TTL board or USB-232 TTL board



RS232-232TTL BOARD

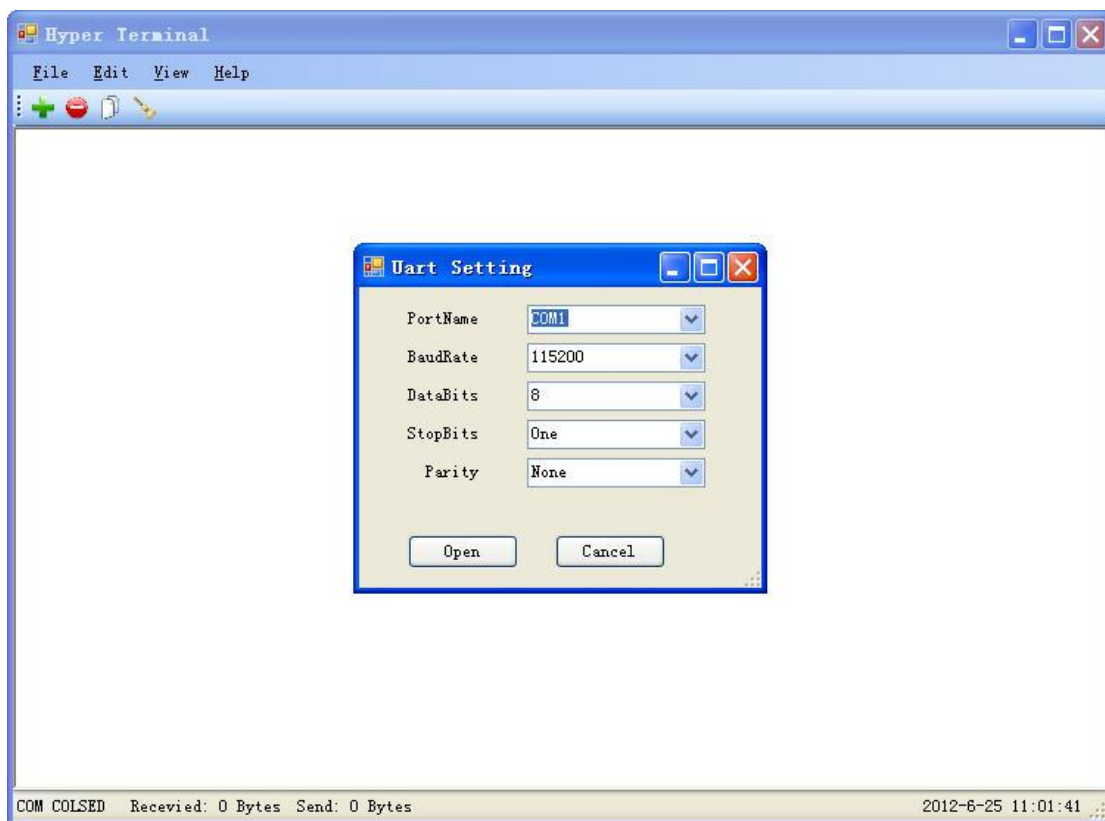


USB-232TTL BOARD

NOTE: if your pc have a stand 232 interface you can choose first board or you need choose second board

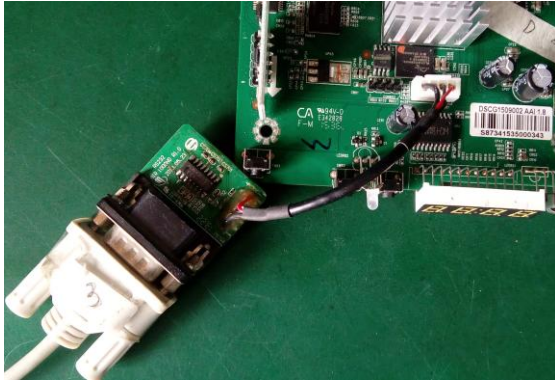
## 2. SW READY

download a serial software tool in the internet, eq. Hyper Terminal



## 3. STEP1

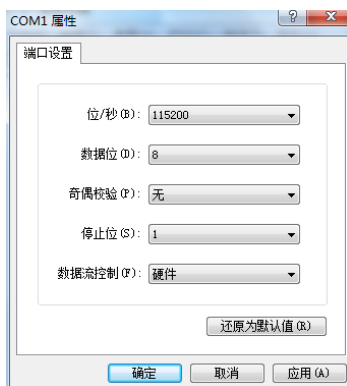
connect your board and box



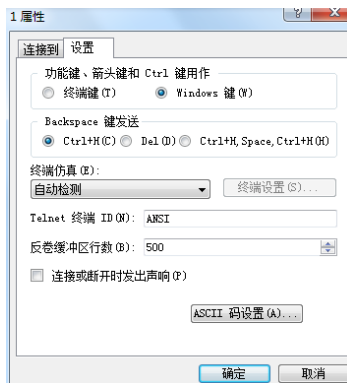
config the hyper terminal

1) port: com1 (if you use USB-232 TTL board the port may be com3 com4 or com5)

2) speed select 115200

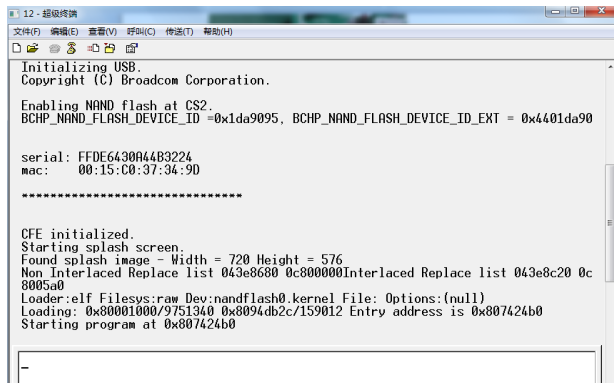


3) setup select windows



4. STEP2

1) press ctrl-c key power on the box until display CFE>



2) here you can see the box mac is 00:15:c0:37:34:9d

3) input correct write mac order like this format: macprog 00:15:c0:37:34:9d

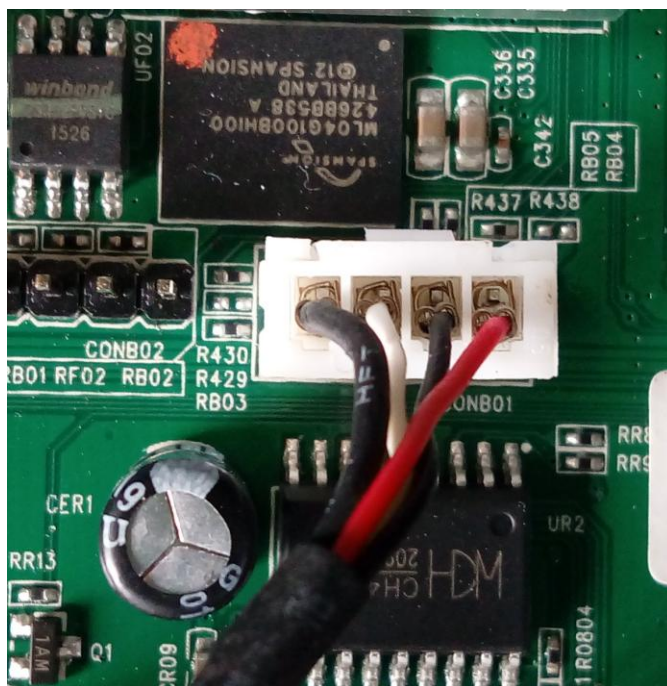
4) if you write success the screen display : \*\*\* command status = 0

5. STEP3

power off the box then power on the box you will see the mac, here you can check whether the mac is right

6. NOTE

232 pin photo explain



GND---R/T---T/R---3.3V

If there is no display you can change middle 2 pin sequence